

GSBF02R12-502-MC1806 (ORDER NO. 089529)

Series GSBF... 12/16 mm mechanical

- ▶ Plunger spacing 12 or 16 mm
- ▶ Upright housing
- ▶ Degree of protection IP67 according to IEC 60529
- ▶ LED function display optional



Description

Switching elements

ES 502 E Snap-action switching contact 1 NC + 1 NO

ES 508 Slow-action switching contact 1 NC \rightarrow

ES 514 Snap-action switching contact 1 NC \rightarrow + 1 NO

On the usage of safety switching elements, the dog distance (4_{-0.5}) must be maintained to achieve the positively driven travel. The dogs must be positively mounted according to EN1088, i.e. riveted, welded or secured in some other way against becoming loose.

LED function display (optional)

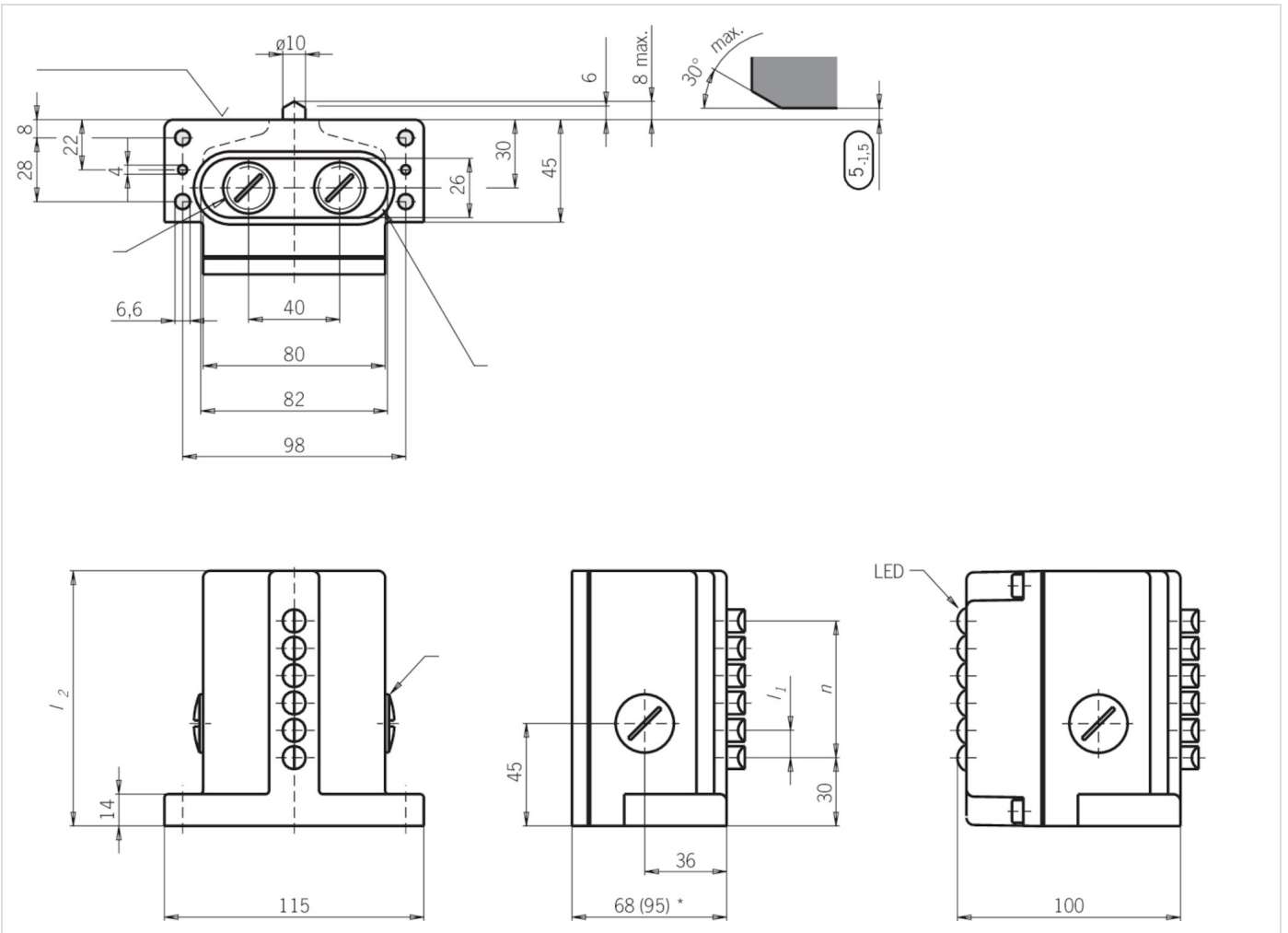
Function displays are available for the following voltage ranges (see accessories)

LE060 12 ... 60 V AC/DC

LE110 110 V AC \pm 15%

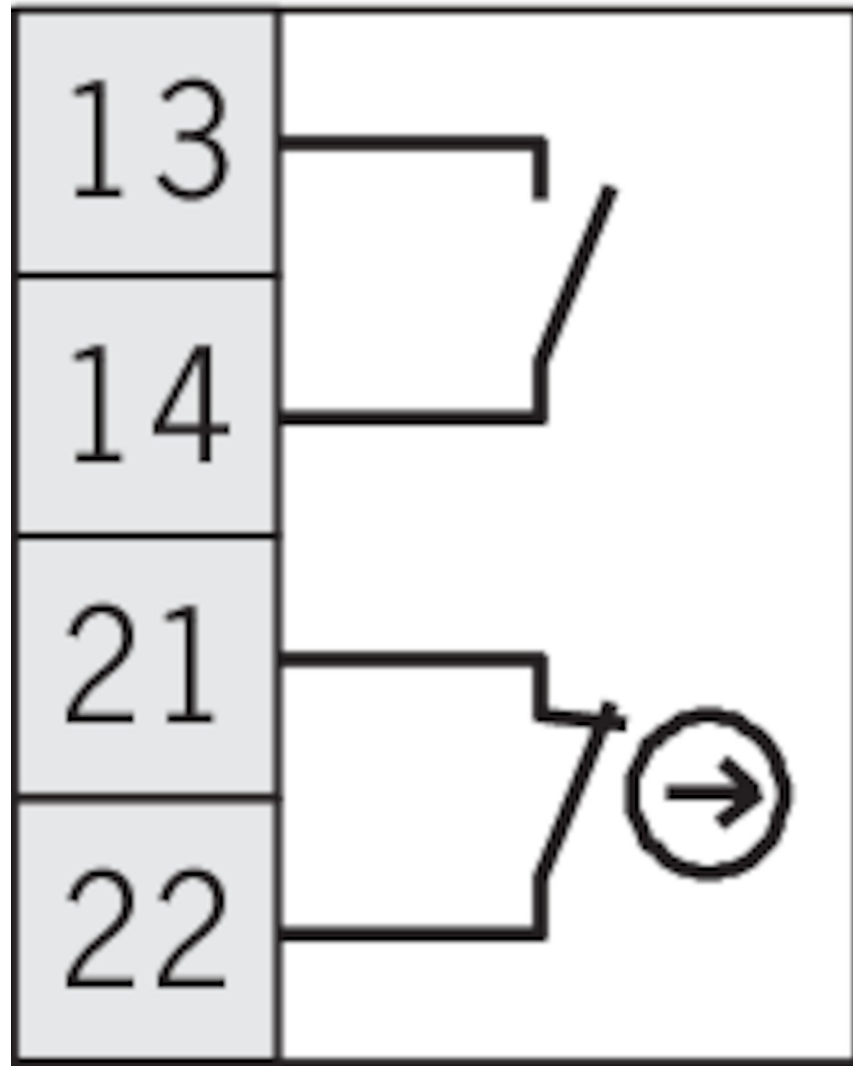
LE220 220 V AC \pm 15%

Dimension drawing



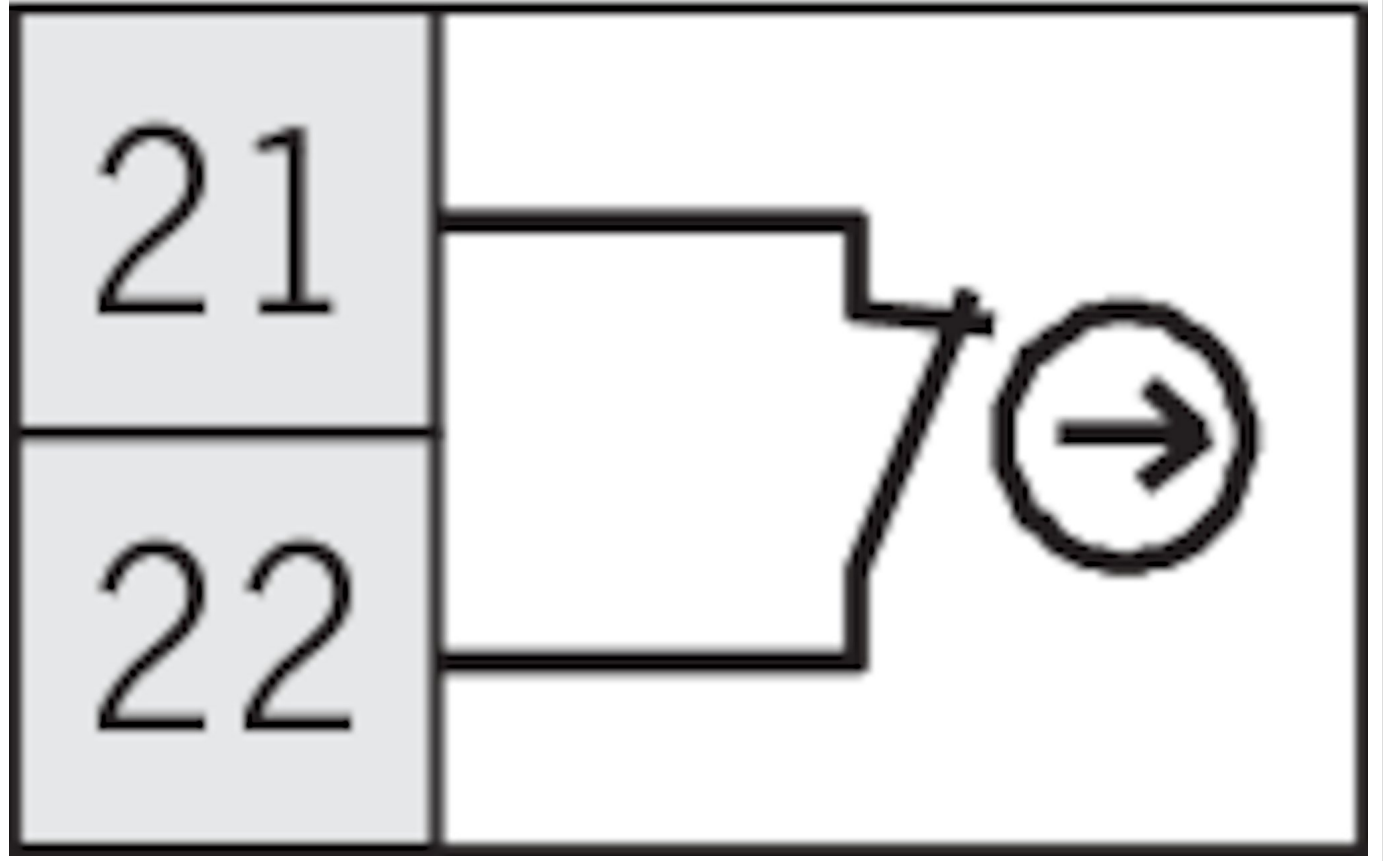
ES 514

ES 514



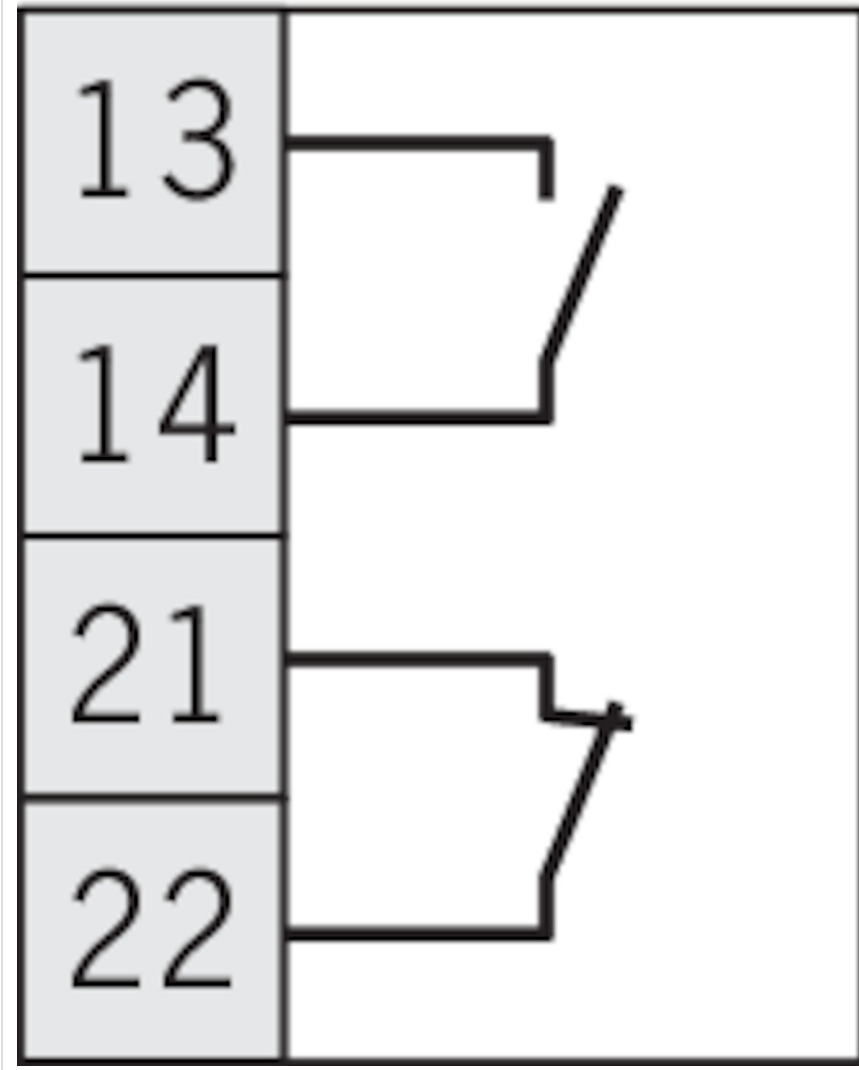
ES 508

ES 508



ES 502 E

ES 502 E



Technical data

Approvals

EAC

Mechanical values and environment

Contact bounce time	< 3ms
Contact closing time	< 4ms
Design	Upright
Housing material	
	Housing Die-cast aluminum, anodized
Weight	
	Net 0,65 kg
Ambient temperature	-5 ... 80 °C
Degree of protection	IP67
Mechanical life	30 x 10 ⁶
Contact material	Silver alloy, gold flashed
Switching principle	Snap-action switching contact
Plunger spacing	12 mm
Installation orientation	Any
Number of switching elements	2
Number of NC contacts	2
Number of NO contacts	2
Connection	2 x M25 x 1.5
Approach speed	0,01 ... 80 m/min
Actuating element	Roller plunger (Plain bearing)
Roller diameter	8 mm
Actuating force	min.20 N
Operating point accuracy	± 0.01 (The reproducible switching point accuracy refers to the axial travel of the plunger after the switching element ES 502 E has been run-in with approx. 2000 operating cycles.)

Electrical connection ratings

Thermal rated current I_{th}	8 A
Utilization category acc. to EN 60947-5-1	
	AC-15 6A 230V
	DC-13 6A 24V
	AC-12 8 A, 250 V
Short circuit protection according to IEC 60269-1	8A gG
Rated insulation voltage U_i	250 V
Rated impulse withstand voltage U_{imp}	2,5 kV
Switching current	
	Min. at DC 12V min.10 mA
Connection cross-section	0,34 ... 1,5 mm ²

Contacts

🏠 EUCHNER GmbH + Co. KG
Kohlhammerstraße 16
70771 Leinfelden-Echterdingen

☎ +49 711 7597-0

📠 +49 711 753316

✉ [info\(at\)euchner.de](mailto:info(at)euchner.de)